

# Relationships and continuity are vital for successful educational outcomes

***Michelle Bond***

Executive Principal

Queensland Hospital Education Programs

Australia

# Equity and Excellence

*Realising the potential of every student*



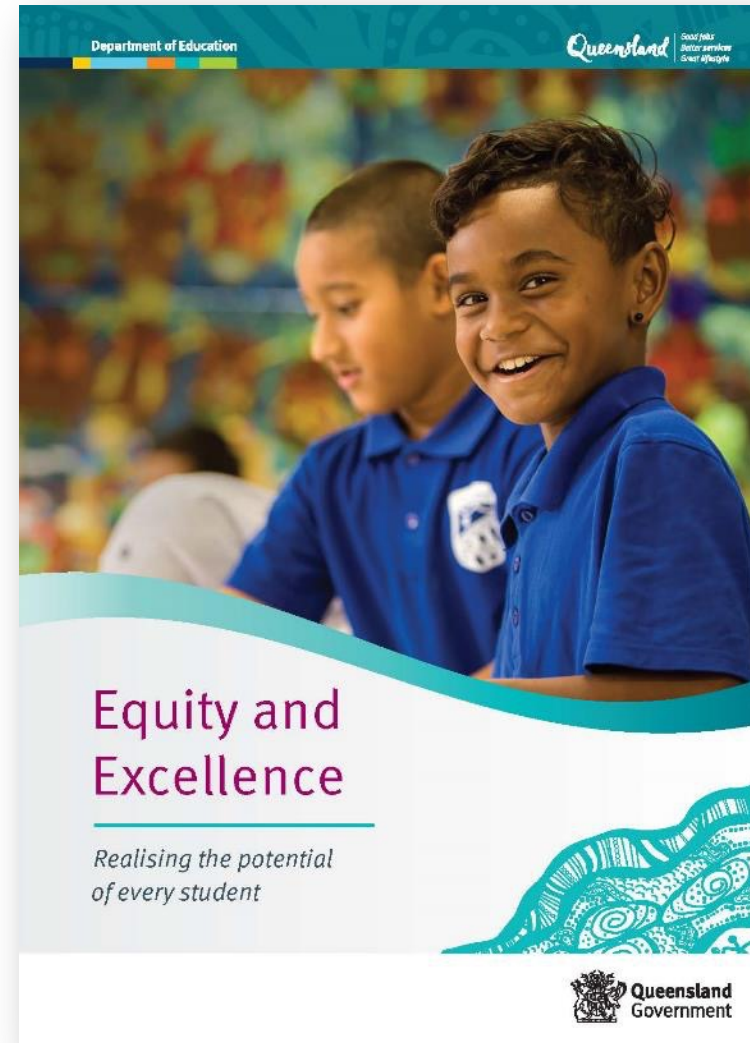
Educational achievement



Wellbeing and engagement



Culture and inclusion



# Students with complex health conditions

The Department of Education is committed to developing and implementing a **statewide continuum** of educational delivery to ensure that students with **chronic health** or complex **mental health** conditions receive **specialised and appropriate educational support** at **all stages** of their illness.

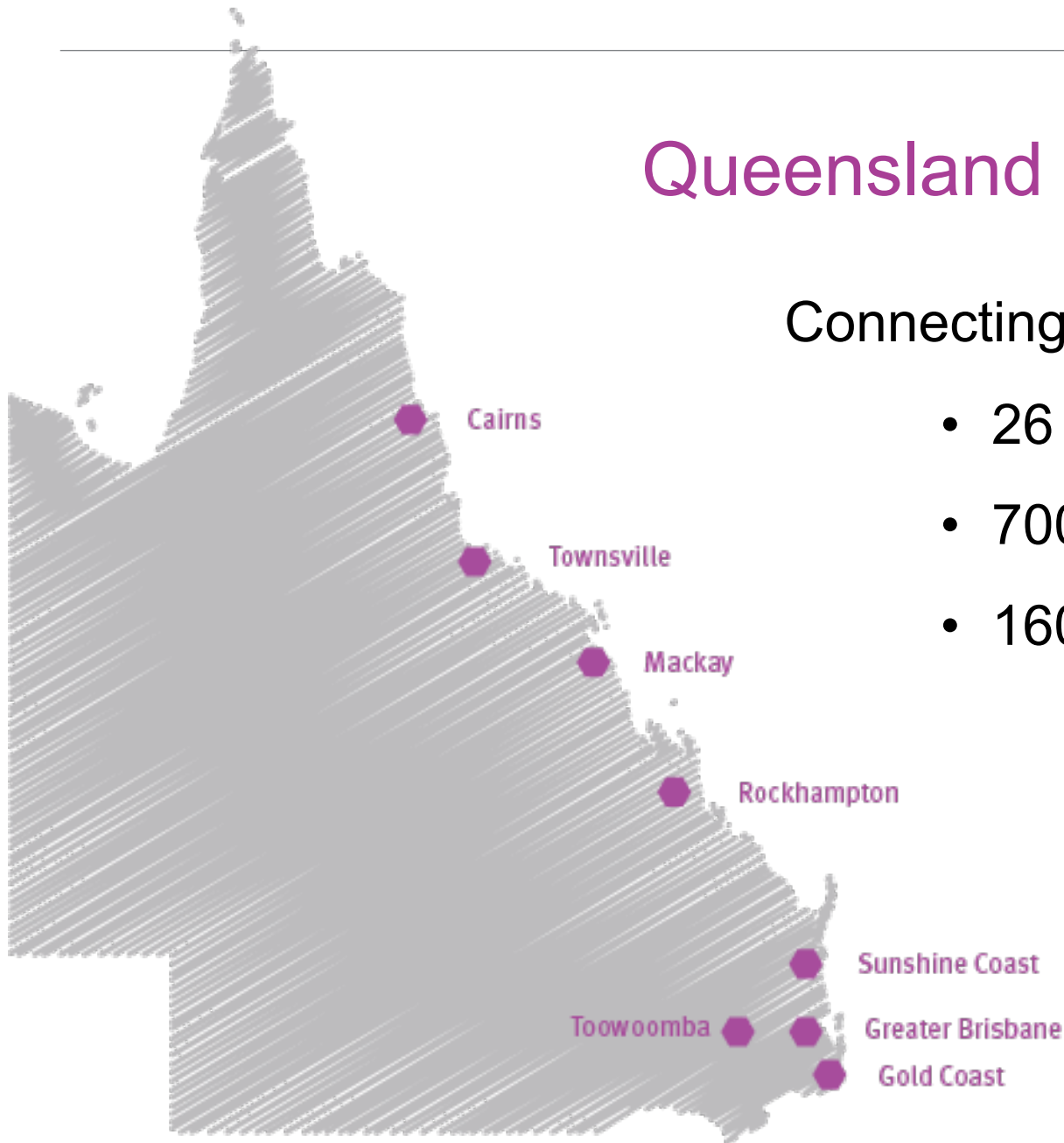




# Queensland hospital programs

Connecting and coordinating:

- 26 programs
- 7000 students
- 160 staff members



# What makes a quality hospital program?

## Inquiry into best practice

**Research** – *What is documented in academic research and professional reports?*



**Learnings from interstate and overseas** –  
*What are other facilities and jurisdictions doing?*

**Consultation** – *What do our stakeholders think?*



# What makes a quality hospital program?

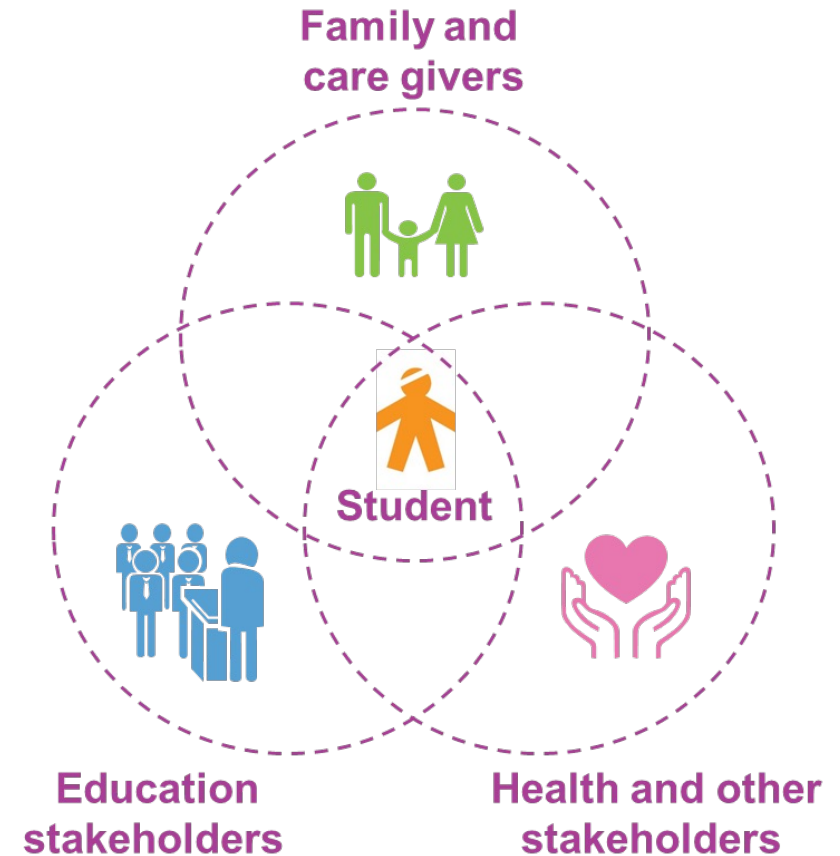


## Five Drivers

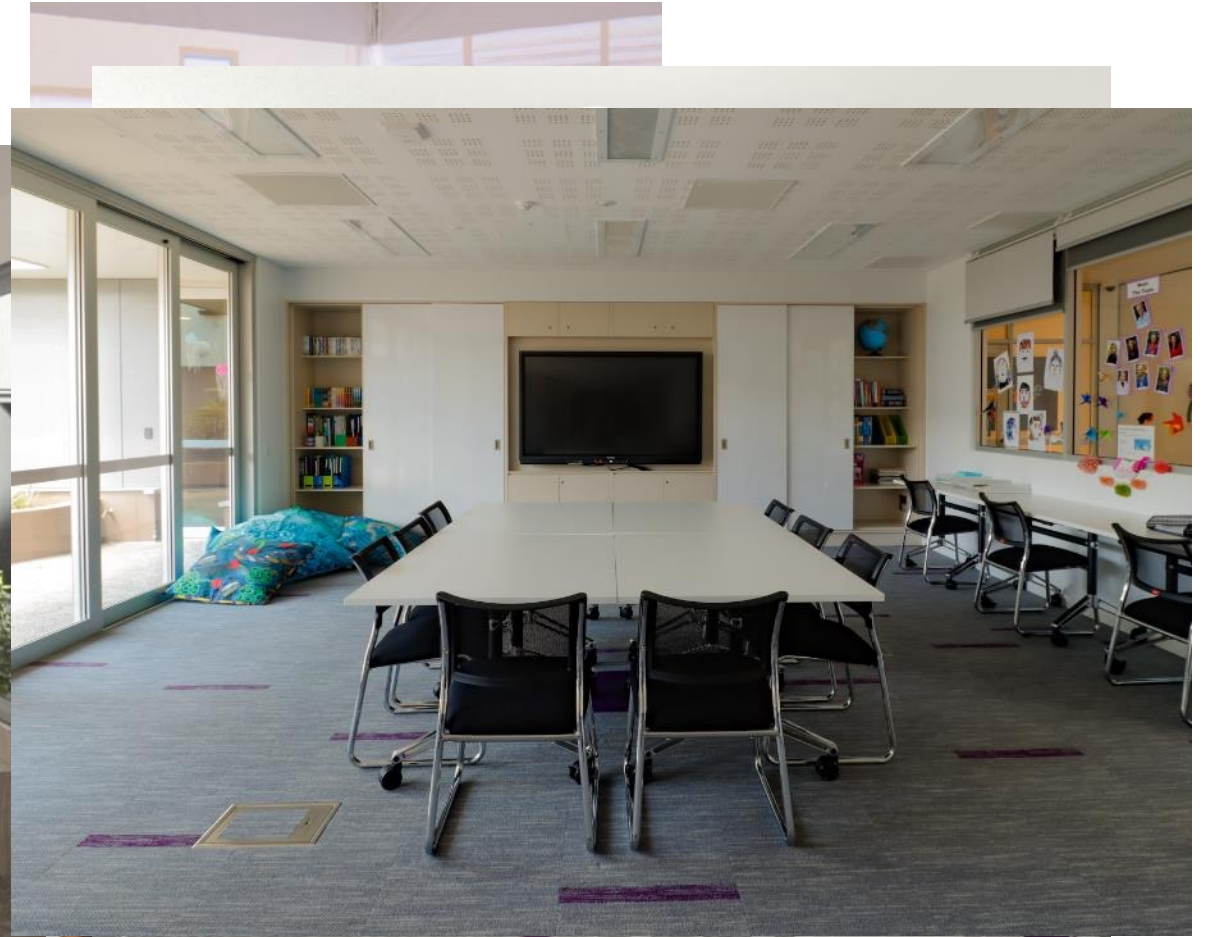
1. Students have **access to learning** at all stages of illness
2. Staff deliver **high-quality teaching and learning** programs
3. Students experience **continuity of learning** across programs
4. Students and staff feel a sense of **belonging** to their school communities
5. Staff engage in **multidisciplinary collaboration**

# Relationships are key

- Statewide approach
- Transition and Engagement Framework
- Virtual hospital education program
- New hospital programs







# Achievements

- Positive collaborative relationships at all levels
- Agreements for clarity of roles

- 160 staff members connected
- Statewide school identity for staff and students



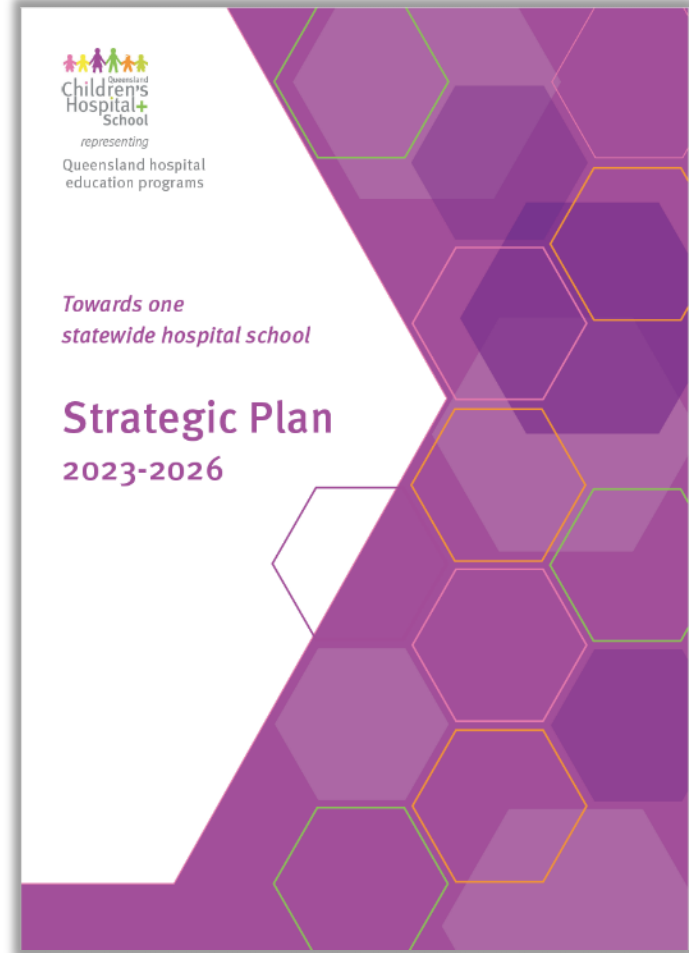
- 26 sites across Queensland
- Modern learning technologies

- Explicit teaching
- High expectations
- Trauma-informed care
- Personalised Learning Plans

- Point of difference: Continuity of learning
- Transition plans
- Guidance Officers at all programs

# Next steps

- Towards one hospital school
- 10-15 new hospital education programs
- System collaboration



Thank you

***Michelle Bond***

Executive Principal

Queensland Children's Hospital School

[mbond8@eq.edu.au](mailto:mbond8@eq.edu.au)